

Pleasant to Customers, Satisfaction to Consumers
Make the World Beautifully



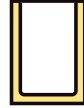
S



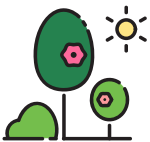
M



E



I



COMPANY OVERVIEW

포장전문기업 세미산업주식회사

Packaging Specialist Company SEMI Industries Co., Ltd.



세상을 아름답게

Beautifying the World



환경을 아름답게

Beautifying the Environment



제품을 아름답게

Beautifying the Products



세미산업주식회사는 1995년 설립 이후 친환경 포장재 개발과 생산을 넘어 공정의 친환경화를 통해 최고 품질의 제품과 포장 전문 솔루션을 제공하고 있습니다. 고객에게 제품을 담는 즐거움, 소비자에게는 포장지를 여는 즐거움, 우리가 만든 포장지가 세상을 아름답게 만든다는 미션을 갖고 지속 가능한 성장을 위해 포장지만을 생각한 포장 전문기업입니다.

Since its establishment in 1995, **SEMI Industries Co., Ltd.** has been dedicated to providing top-quality products and packaging solutions through the development and production of eco-friendly packaging materials and environmentally conscious processes. As a packaging specialist company solely focused on sustainable growth, our mission is to provide joy to our customers when packaging their products, delight to consumers as they unwrap, and to enhance the beauty of the world through our eco-conscious packaging.

RESEARCH & DEVELOPMENT

환경 친화적 제품 및 소재 개발, 인체 무해한 포장지 품질관리



Development of Environmentally Friendly Products and Materials,
Quality Control of Harmless Packaging



세미산업주식회사는 우수한 기술력과 전문 인력을 기반으로 포장지의 새로운 기술 개발을 통해 제품의 보호, 보존 및 제품의 가치창조뿐만 아니라 환경과 고객을 우선 생각하겠습니다. 고객이 더 안심하고 사용할 수 있는 포장지를 만들기 위해 지속적인 연구, 개발과 노하우를 통해 생산성을 높이고 유해성 검사와 체계적인 품질관리, 환경친화적 소재를 개발하여 아름다운 고품질의 포장지를 만드는 데 노력하겠습니다.

Leveraging our advanced technology and a team of skilled professionals, **SEMI Industries Co., Ltd.** prioritizes the protection, preservation, and value creation of products through new packaging technology development. We are committed to prioritizing both environmental responsibility and customer satisfaction. To ensure that our customers can use our packaging with confidence, we continuously enhance our productivity through ongoing research, innovation, and accumulated expertise. We also focus on developing environmentally friendly materials and conducting systematic quality control and safety tests to produce beautiful, high-quality packaging.



시험 및 검사 설비 Test and Inspection Equipment	용도 Usage
만능 재료 시험기 Universal Testing Machine	인장강도, 박리강도, 마찰계수, 펴쳐강도 시험 Measurement the film's tensile, peel strength, coefficient of friction, puncture resistance test
열 경사 시험기기 Heat Gradient Tester	접착온도/강도 검사 : 열, 압력, 시간, 냉각 후 접착강도 시험 Calculate the optimum characteristics of the temperature and pressure required to heat seal the film
기체 크로마토그래피 Gas Chromatography	잔류용제 검사 Analysis of residual solvent used in gravure printing and laminating process
고압 멸균 시험기 Auto Clave	레토르트 검사 High temperature required retort pouch for testing
확대경 Magnifying Glass	디자인 확대 검사(× 200) Print design and contaminant inspection
색차계 Color Difference Meter	인쇄물 색상 검사 : 색차를 수량적으로 표시 Measurement the color of ink and paper before, during, and after print production to ensure color stays on target
핫택 시험기 Hot Tack Tester	접착강도 시험 : 일정조건(열, 압력, 시간)에서 접착 후 바로 접착강도 측정 Calculate the optimum characteristics of the temperature and pressure required to heat seal the film

PRODUCTS TYPES

자동롤 Custom roll stock

롤 타입 자동설비에 적합한 제품으로 분말, 액상, 볶음밥, 띠라벨, 스틱포, 의약품, 리드지 등 적용가능
Application cases include powder, liquid, fried rice, strip label, stick pouch, pharmaceutical, lidding film.



이방, 삼방, 스탠드업, M방, T방, 스파우트, BOX 파우치

열접착면과 모양에 따라 2면, 3면, 스탠드업, M형, T형, 스파우트, BOX 등 다양한 형태의 제품 생산 가능
Production of various product forms depending on the heat-sealing surface and shape: 2-side, 3-side, stand-up, M-shape, T-shape, Spout, Box, etc.



2-Side Seal Pouch



3-Side Seal Pouch



Stand-Up Pouch



M Seal Pouch



T Seal Pouch



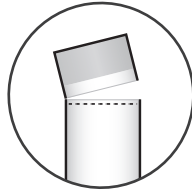
Spout Pouch



Box Pouch

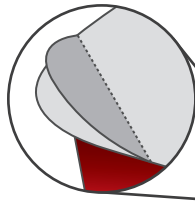
이지티어 Easy Tear

음료, 조미료,
커피스틱 등
Beverages, Seasonings,
Coffee sticks, etc.



PET / VMPET / LLDPE
PET / AL / LLDPE

NY / EPL
PET / VMPET / EPL

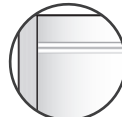


리딩필름 이지오픈 Lidding Film Easy open

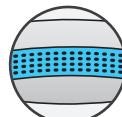
장류,
두부 등
Sauces, Tofu, etc.

지퍼 Zipper

벨크로,
포켓슬라이드, 더블지퍼 등
제품 특성에 맞게 적용
Velcro, Pocket Slide, Double Zipper,
etc., applied according to
product characteristics



PTC



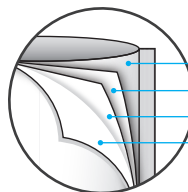
Velcro



Pocket Slide

PET / VMPET / LLDPE
PET / AL / LLDPE
PET / LLDPE

PET / AL / NY / RCPP
PET / NY / AL / NY / RCPP



Polypropylene
NY
Aluminium Foil
PET

레토르트 HMR Retort · Home Meal Replacement

탕류,
소스류 등
Soups, sauces,
etc.

PRODUCTS TYPES

분말·
조미료류
Powder
seasoning



김치류
Kimchi



띠라벨류
Label



소스류
Sauce



커피류 Coffee



냉장·냉동 Refrigerated· Frozen food



레토르트· 전자레인지 Retort· Microwave



건강보조 Health supplement



PRODUCTS TYPES

사료
PET Food



의약품
Medicine



세제류
Detergent



SE SERIES 고속 충전 액상소스용 포장지

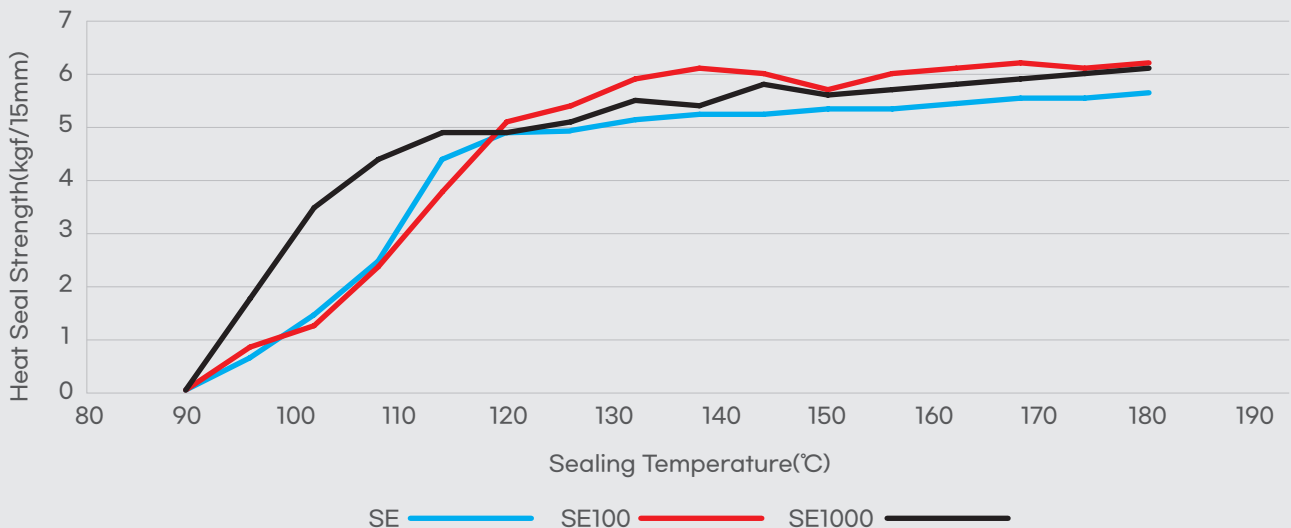
고속 충전 액상소스용 제품으로 **실강도, 핫택성, 저온 실링성, 협잡물실성**이 **우수**하고 경제적인 포장지

※ 협잡물실성 : 실링면에 액상소스가 있어도 실링이 우수

Packaging developed for high-speed filling liquid sauces: Economical packaging with excellent tensile strength, hot tack, low-temperature sealing properties, and contamination resistance.

※ Contamination resistance : Excellent sealing performance even with liquid sauces on the sealing surface.

Heat Seal Property of SE Series
Single Side Heating @ 2kgf/cm², 1second



APPLICATION CASE

고속 충전 액상소스용 포장

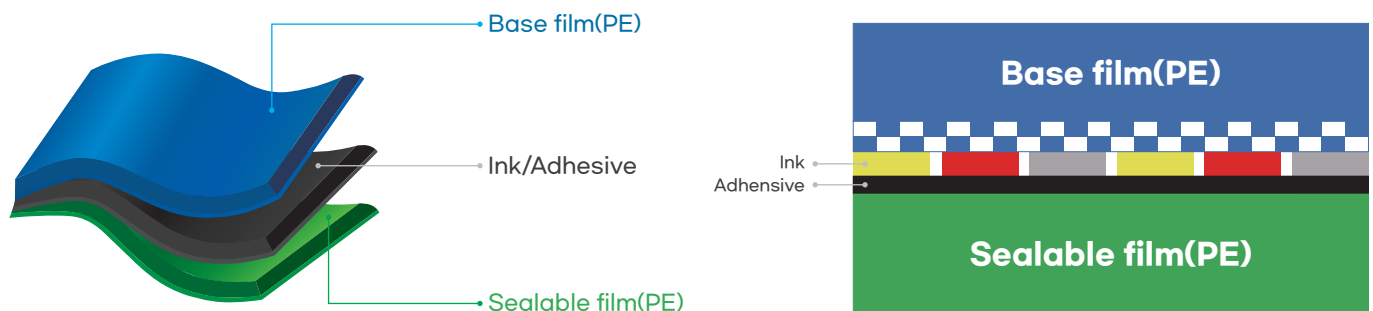
High-speed filling liquid sauce packaging



MONO SERIES 친환경 단일재질 포장지

재활용 용이한 **단일재질**로 **차단성**,
인쇄/가공 적성이 **우수**하고 친환경적인 포장지

Environmentally friendly single-material packaging :
Easy to recycle, with excellent barrier properties and print/processing suitability.



PROPERTIES

Properties		Result	Method
O.T.R	cc/m ² d	1 ~ 5	ASTM D - 3985
W.V.T.R	g/m ² d	1 ~ 10	ASTM F - 1249
Heat Seal Strength	kgf/15mm	5.0 ▲	ASTM D - 882

APPLICATION CASE



Coffee



Detergent



Beef Jerky



Pet Food

CERTIFICATION



ISO 9001



ISO 14001



ISO 45001



FSSC 22000



녹색인증
Green Certification



소비자중심경영 인증
Consumer Centered Management



가족친화 인증
Best Family Management



특허 제10-2114280호
Certificate of Patent



특허 제10-2114281호
Certificate of Patent



SEMI INDUSTRIES CO., LTD

OFFICE :

경기도 화성시 장안면 포승장안로 1094

1094, Poseungjangan-ro, Jangan-myeon, Hwaseong-si, Gyeonggi-do, Republic of Korea

TEL : +82-31-351-9811 **FAX :** +82-31-351-9803 **E-MAIL :** sm201073@semi.bizmeko.com